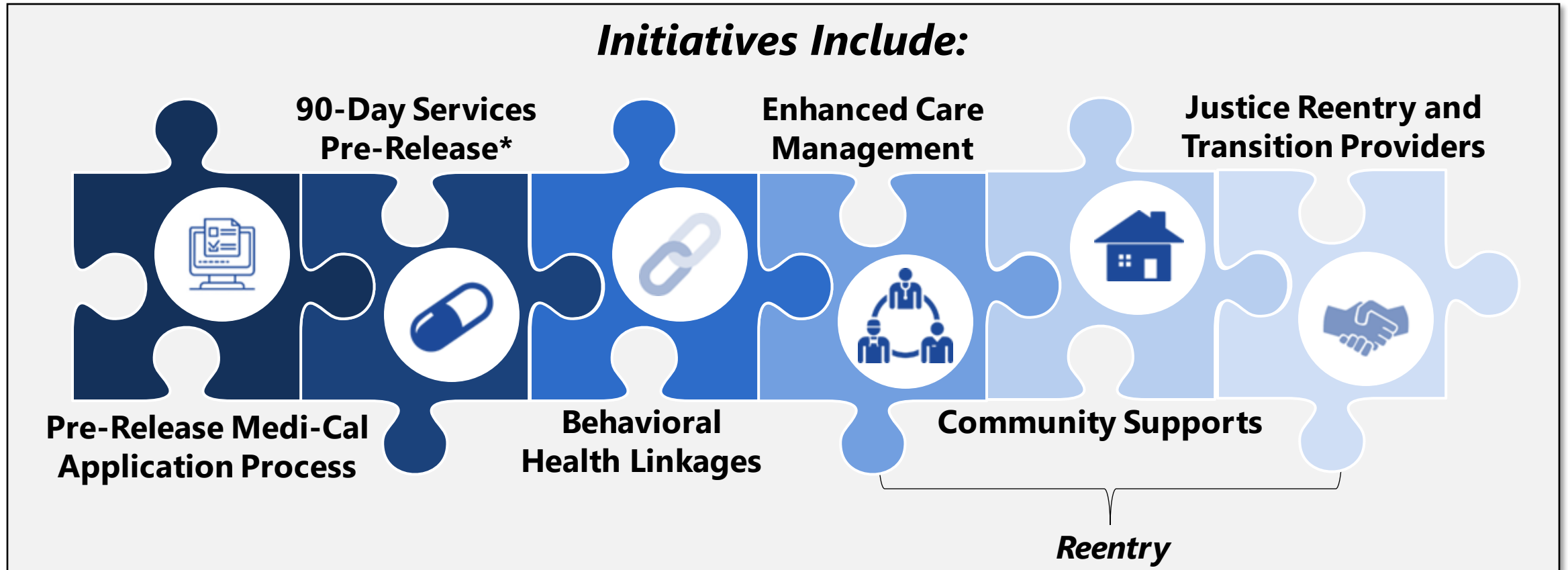


CalAIM Initiatives to Support Justice-Involved (JI) Populations

CalAIM JI initiatives support JI individuals by providing key services pre-release, enrolling them in Medi-Cal coverage, and connecting them with behavioral health, social services, and other providers that can support their reentry from prisons, jails, and youth correctional facilities.



*The initiative to provide pre-release services to individuals in the 90 days prior to release from state prison, county jails, and youth correctional facilities is dependent upon CMS approval of DHCS' CalAIM 1115 waiver request. Negotiations between DHCS and CMS have been ongoing since fall 2021.